



Lochgilphead Parish Church

The LINK

Volume 16 Issue 1

January/February 2018

www.lpchurch.co.uk

Scottish Charity
SCO 16311



MESSAGE FROM THE MANSE

January, 2018.

Dear Friends,

I am writing this letter at the end of the first week in January while the frost is thick on the ground. It's not the time of year for gardening in Scotland, but for us as a congregation, it is the time of year to prepare the ground for whatever we decide to do in the course of the next year.

Preparation is crucial as any teacher will tell us. Forward planning is essential and, no doubt, some of you who know me well are laughing at that comment. It is essential to plan because it is only when we know what our goals are that we can decide what needs to be done in order to achieve them.

In the photo opposite, which was taken in November on my visit to Malawi, Leah, the minister's wife is preparing the ground for planting vegetables behind the manse. She needs to feed her family in the coming year as well as many others who will be without the means to buy food. When a small piece of ground is ready, she takes a leaf off a plant which is already growing in the ground and she plants it. I watched in amazement but without preparing the ground, there would be no harvest.



Everywhere I looked in Malawi, the ground had been prepared by hand. It was hard labour. Fields had been prepared and in many cases, the maize had already been planted but not all were so far advanced.



An evangelist who lived in Monkey Bay on the lake had to postpone a flight to Britain because the rains had come. She needed to return to her home to plant their maize for this year. The timing was crucial. She couldn't just put it off till after her holiday because by then it would be too late and she needed to be able to feed her family in the coming months.

There is a time for preparation, a time for sowing and a time for reaping. That is not just true where food production is concerned. It is true in every area of life. A child has to learn to shape and recognise letters before he or she can become a nov-

elist in later life. A mathematician has to learn to count before he or she can fathom the deeper mysteries of that world. On Dancing on Ice, the skaters have to learn the basics before they can astound us with their skill.

As a congregation, we have been accepted for the Path of Renewal initiative which was launched by the Church of Scotland in September 2015 to allow ministers and Church members the opportunity to reflect on the Church as it is and to explore new approaches to Church life. At present we could be said to be skating on thin ice.

Rev Liz Crumlsh who coordinates Path of Renewal says that it offers ministers mentorship and gives



Inside
this
Issue

Message from
the Manse

Coffee Morn-
ing Organisers
Wanted.
Gentle Re-
minder from
the Editor.

Financial Re-
port.
Malawi &
MidArgyll
Twinning Pro-
ject.
Midweek Re-
flection,
Pause for
Thought.

Parish Notices

Parish
Notices.
Burns Supper.

Crossword
Laughter is
the Best
Medicine

Kids' Corner

Rotas and
What's On

congregations an opportunity to “stand back, reflect and discuss.” Liz says “It’s about identifying the path God lays before us and taking those first steps that begin to change the culture of the Church.

It sounds very grand but in many ways, it is very simple. It is about setting goals and preparing the ground which in reality means getting back to basics. This is our time for preparing the ground and for getting back to basics.



It won’t be glamorous work. It will be more like hard labour, at least for our minds, because it will involve us thinking outside the box. It will involve us looking at the Church through fresh eyes and that is always a challenge because it takes us outside our comfort zone.

But maybe when we get back to basics, maybe we will realise that we have strayed from the path on which God is leading us, not in every sense, but maybe there are some things we could do which would make following our Lord simpler and which would make the harvest more abundant.

At present we keep trying to build on the solid ground over which we have been walking as a Church for generations. It has served us well but maybe we need to cultivate some new ground which may be rich in minerals and maybe that ground will

allow new growth in the coming year.

It is both a challenging and encouraging prospect as we consider how we can meet the needs of a changing world and a changing culture.

As we step out into a new year, It is my prayer that God will bless each one of us as individuals and as a family of faith.

With prayerful best wishes,

Hilda C. Smith

COFFEE MORNING ORGANISERS WANTED

February 24th
March 31st (*David & Roberta Bowen*)
April 28th
May 26th
August 25th
September 29th
October 27th – Tatties Galore Lunch (*Margaret Davidson*)
November 24th

These are the dates of the Coffee Mornings for 2018. We are looking for people to take on the organisation of and run a Coffee Morning.

If you can help please choose a suitable date and let Margaret know (603784).

A GENTLE REMINDER FROM THE EDITOR

Please, please, please can you send any contributions for The Link to me by 20th of the month preceding publication? This will enable me to put everything together for printing before the end of the month.

The effects of late contributions are that the magazine often needs to be reorganised and will be late in production. Some of the notices and rotas for the start of the month will already have been and gone! In other words, The Link is already out of date before you receive it!!

Contributions for the March/April edition will be due on or before Tuesday 20th February.

Thank you

Roberta Bowen

FINANCIAL REPORT

There is no report for this issue of the Link as our financial year ends on 31st December and full figures will be made available in the first quarter of the year once the Annual Accounts for Lochgilphead Parish Church have been completed and produced.

Mary MacDonald
Interim Treasurer

Malawi and Mid-Argyll Twinning Group

Thanks to the generosity and skill of many knitters in Mid-Argyll and beyond, we have again gathered more than two large suitcases of clothes and blankets for babies in Malawi. We hope that soon they will be on their way to Central Africa.


When nine of us visited Kasamba in 2014, we spent a morning at the maternity unit where our gifts are distributed. Forty plus years before in Mulanje Mission Hospital, the incubator was a wooden box heated by 2 'pigs' – stoneware hot water bottles. Technology has moved on in many hospitals. So in 2014 we found electric incubators for premature babies. All babies weighing less than 1.1kg are nursed in incubators – at busy times, they may have to share! I put a tiny hat beside each baby and whispered a blessing.



Once the babies weigh from 1.2kg to 1.4kg they are put on kangaroo mother care. A very clever person realised that baby kangaroos thrive in the mother's pouch. So in the kangaroo room each baby, wearing hat, socks and nappy, is swaddled on the bare breast of mother, grandmother or even father as Malawian men are liberated into childcare.

When they weigh 1.5kg and mothers are confident, babies are discharged to care at home with weekly check-ups at the hospital. At 2.5kg the baby is discharged by which time she or he is used to the comfort of the breast and the mothers decide how long they can continue carrying the baby that way.

I asked Desiree Mhango who visited with the Kasamba group in 2011 about still births and neonatal deaths remembering the Sisters at Mulanje talking about grieving mothers and grandmothers trying not to cry as they queued for the bus as they were not allowed to travel with a dead baby. These sad births are not recognised culturally and only women are involved in the burial in a designated graveyard, and in a shallow grave as it is believed that a deep grave will make the woman barren. The baby is not recognised as a human being so the mother mustn't cry but she suffers quietly with no access to counselling services. I remember bereaved parents in Scotland in much the same situation. Now I hope we are more sensitive to their needs. Mollie Hood



MIDWEEK
PRAY . PRAISE . REFUEL

Reflection

Are you searching for the meaning of life?
Do you wonder where Christianity fits in your life?
Would you like to worship in a less formal way?
Or are you just unable to get to Church on a Sunday?

The Monthly Midweek Reflection could be for you.

Once a month, at 1.00pm for 15 - 20 minutes...
A time of calm in the midst of a busy week
Midweek Reflection is a relaxed, informal 'mini' service lasting no more than 20 minutes, which offers a time for reflection, song and prayer.

Wednesday 31 January
Wednesday 28 February,
In Lochgilphead Parish Church



PAUSE FOR THOUGHT

Every second Sunday
10.30am - 10.45am in the hall



GUILD NEWS

The Guild met at the end of November when Allison Pearson showed us how to make a beautiful Christmas floral decoration as a table centrepiece as well as some smaller displays. Allison made it look so easy and effective and gave hints and tips for some of us to try it ourselves.



The first meeting in December was a combination of business meeting to distribute our funds raised during the year and a fun quiz night which was supposed to be an easy one followed by a quiz based on the second line of various hymns from which we had to name the hymn. One or two of our members excelled themselves, although the majority had major mind blanks. We mostly knew the tunes but that wasn't enough for our quizmaster, but it was a fun night and thanks to May Taylor for

organising it.

The Guild finished 2017 with a Christmas Dinner at the Rumblin Tum and good food and merriment was enjoyed by all.

Knit and Natter

The Knit and Natter Group enjoying their Christmas party



Ooh, who's the person in the mirror?!

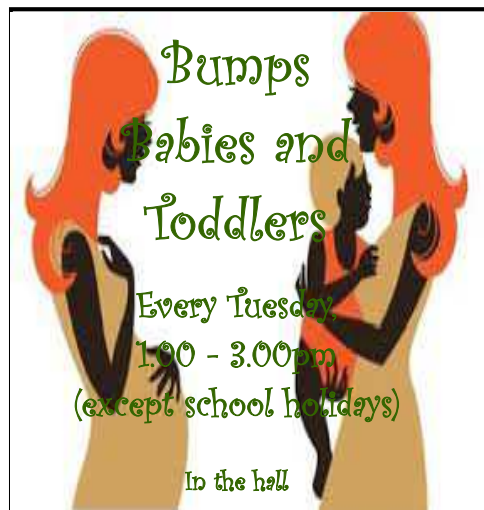


Let's get Knitting!

We meet fortnightly in various venues to knit, chat, laugh, learn new techniques and partake of a light supper.

New members, both experienced and beginners are welcome to come along and join us.

For more information contact Margaret on 01546 603784.



**Bumps
Babies and
Toddlers**

Every Tuesday
1.00 - 3.00pm
(except school holidays)

In the hall



Drop In Café
Every
Wednesday
10.00am to 3.30pm

We really need some more volunteers to help in the cafe for a couple of hours once or twice a month. The café is very busy at lunchtimes and extra hands would be much appreciated.
If you would like to help please contact Margaret on 603784.

Wednesday Drop in Café

If you would like to go to the café on a Wednesday but have difficulty getting there, then a lift may be available. Contact Ian Davidson on 01546 603784 to arrange transport.



DATE OF NEXT MEETINGS
January 25th
February 22nd

In the hall

FUN, FOOD AND WORSHIP

Exciting Crafts, Stories, Songs & Activities

Why not come along and give it a try.

All children must be accompanied by an adult.

DON'T MISS IT!

LOCHGILPHEAD PARISH CHURCH COFFEE MORNINGS

10.00am-12 noon
in the hall

Saturday 27th January

Organised by

TBC

and

Saturday 24th February

Organised by

TBC

Offers of help, donations of home baking and raffle prizes will be most appreciated.

THE GUILD



THEME: - GO IN LOVE

Lochgilphead Parish Hall
7.30pm

9 January	Dochas <i>Maggie McLaren</i>
23 January	Art and Faith <i>TBC</i>
13 February	Crinan Canal <i>Donna Mallan</i>
27 February	Humanist Beliefs <i>Belinda Braithwaite</i>

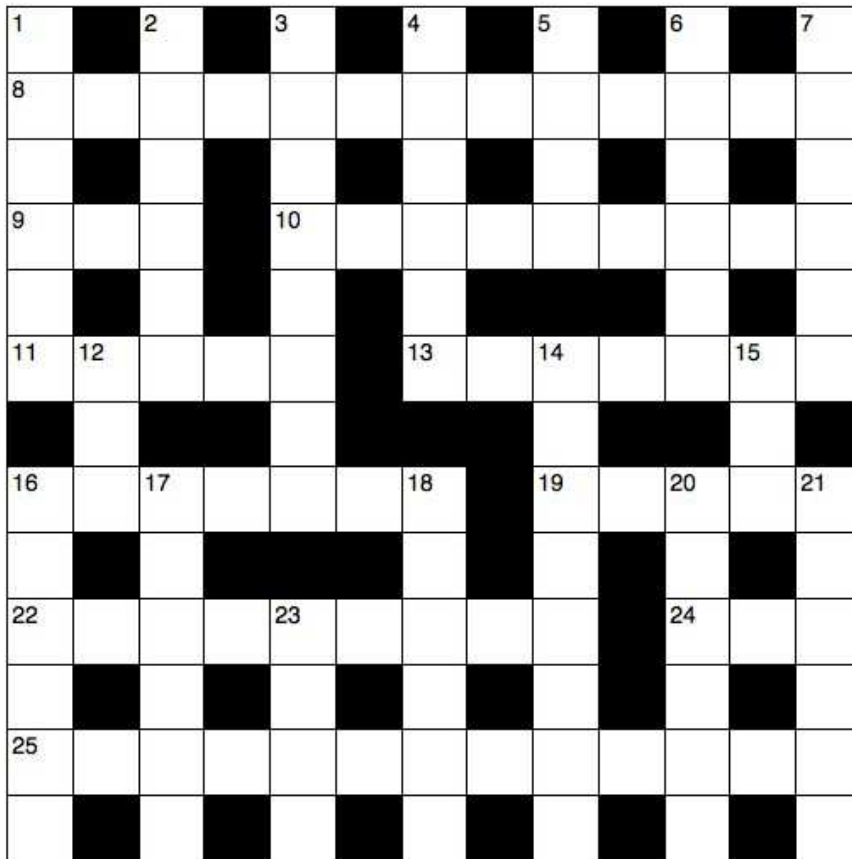
Saturday 3rd February

7.30pm prompt
in
Lochgilphead Parish Hall

£12.00 per head

Sheet to book a place will be on the table at the back of the church from mid January or phone Margaret Davidson on 603784

Crossword



Prayer changes things

The little girl had been so naughty during the Christmas break that her mother decided to give her the worst kind of punishment. She told her she couldn't go on the New Year's Day family outing. But when the day finally came, her mother felt she had been too harsh. But when she told her daughter that she could go after all, the child's reaction was one of gloom and dismay. "What's the matter? I thought you'd be glad to go," her mother said.

"But it's too late now!" the little girl protested. "I've already prayed for rain."

With New Year in mind, we think of time and the future...

Every man's life lies within the present; for the past is spent and done with, and the future is uncertain. *Marcus Aurelius Antoninus*

Life is too short for us to do everything we want to do; but it is long enough for us to do everything God wants us to do.

The future belongs to those who belong to God. This is hope. *W T Purkiser*

I find the great thing in this world is not so much where we stand, as in what direction we are moving. *OW Holmes*

If you are leaping a ravine, the moment of take-off is a bad time to be considering alternative strategies. *John Cleese*

Men never plan to be failures; they simply fail to plan to be successful. *William A Ward*

Nothing is particularly hard if you divide it into small jobs. *Henry Ford*

Life is what happens to you when you are busy making other plans. *John Lennon*

Crossword Clues and Answers

Across

- 8 How the Abyss (NIV) is described in the Authorized Version (Revelation 9:1) (10,3)
 9 Frozen water (Ezekiel 1:22) (3)
 10 The Ten Commandments (9)
 11 In Roman Catholic theology, neither heaven nor hell (5)
 13 Des cons (anag.) (7)
 16 'Though [your sins] are red as — , they shall be like wool' (Isaiah 1:18) (7)
 19 Keen (Romans 1:15) (5)
 22 Repugnant, loathsome (Jeremiah 24:9) (9)
 24 Drink like an animal (Judges 7:5) (3)
 25 First and last (Revelation 22:13) (5,3,5)

Down

- 1 Father of Ahi, a Gadite (1 Chronicles 5:15) (6)
 2 Where David found the stone with which he killed Goliath (1 Samuel 17:40) (6)
 3 'Hour by hour fresh lips are making thy — doings heard on high' (8)
 4 'And there were shepherds living out in the fields near by, keeping watch over their — at night' (Luke 2:8) (6)
 5 United Society for Christian Literature (1,1,1,1)
 6 'If he refuses to listen even to the church, treat him as you would — — or a tax collector' (Matthew 18:17) (1,5)
 7 Where Paul was taken when things became difficult for him in Berea (Acts 17:15) (6)
 12 Istituto per le Opere di Religione (Vatican Bank) (1,1,1)
 14 'Therefore, if anyone is in Christ, he is a new — ; the old has gone, the new has come!' (2 Corinthians 5:17) (8)
 15 Used to colour ram skins red for use in the tabernacle (Exodus 25:5) (3)
 16 Vat car (anag.) (6)

- 17 'Be joyful — — , patient in affliction, faithful in prayer' (Romans 12:12) (6)
 18 'The parts that are unrepresentable are treated with special modesty, while our presentable parts — — special treatment' (1 Corinthians 12:23) (4,2)
 20 Ancient rowing boat (Isaiah 33:21) (6)
 21 Say again (2 Corinthians 11:16) (6)
 23 What Jesus did in the synagogue in Nazareth after he stood up (Luke 4:16) (4)

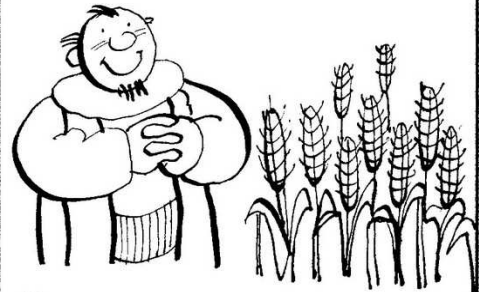
Kids Corner



The tale of the RICH FOOL



JESUS OFTEN TOLD STORIES WITH HIDDEN MEANINGS

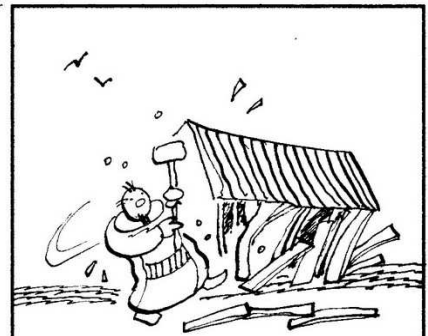


ONE STORY WAS ABOUT A MAN WHO HAD LOTS OF LAND WHICH GREW WONDERFUL WHEAT.

I HAVEN'T ANYWHERE TO KEEP ALL THIS FOOD



I KKNOW! I'LL PULL DOWN MY BARN AND BUILD BIGGER ONES



THE MAN DEMOLISHED HIS OLD BARN...

...AND BEGAN TO BUILD NEW ONES.



SOON I'LL BE THE RICHEST MAN IN THE TOWN!



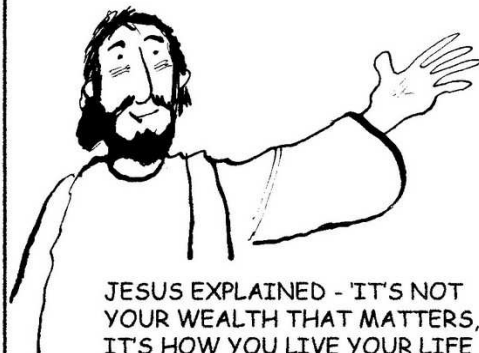
I'M SO LUCKY - I CAN EAT, DRINK AND BE MERRY!



BUT THAT VERY NIGHT, THE MAN DIED!



WHAT GOOD WERE HIS RICHES NOW?



JESUS EXPLAINED - IT'S NOT YOUR WEALTH THAT MATTERS, IT'S HOW YOU LIVE YOUR LIFE THAT'S IMPORTANT

Rotas for January/February 2018

	Door Duty	Prayers	Flowers (Contact - E Armstrong)	Readers	Tea/Coffee Duty (Contact - M. Davidson)
Jan 7th	J Kirk & K Thompson	J Morrison	tbc	K Thompson	J & R Morrison
14th	D & R Bowen	I Davidson	tbc	R Bowen	M Davidson & K Thompson
21st	M Jacobsen & I McMillan	M Davidson	tbc	M Jacobsen	S & M Taylor
28th	J & R Morrison	M Jacobsen	tbc	J Morrison	J & A Barclay
Feb 4th	S & M Taylor	S Taylor	tbc	S Taylor	F Elder & L Mochrie
11th	C Gilmour & A Hunter	J Morrison	tbc	F Cameron	S Morrison & T Cameron
18th	M MacFadyen & E Munro	I Davidson	tbc	M MacFadyen	A Pearson & E MacCallum
25th	S Stankey & I MacArthur	M Davidson	tbc	S Stankey	S & M MacFadyen
March 4th	I & M Davidson	M Jacobsen	tbc	M Davidson	S Stankey & M Jacobsen

If you are unable to carry out any of these duties please arrange a replacement.

Services (all at 11.00am except where stated)

January 7th	Rev. Hilda Smith
14th	Rev. Hilda Smith
21st	John Morrison
28th	Rev Hilda Smith
February 4th	Rev Hilda Smith
11th	Rev Hilda Smith
18th	Rev. Hilda Smith
25th	Rev. Hilda Smith
March 4th	Rev Hilda Smith

Other Events

Every Tuesday (except school holidays)	Bumps, Babies and Toddlers 1.00 - 3.00pm
Every Wednesday	Drop in Cafe, 10.00am - 3.30pm
January 10th & 24th February 7th & 21st	Knit and Natter Group, 7.30pm
January 25th February 22nd	Messy Church, 4.00pm—6.00pm
January 27th February 24th	Coffee Mornings
February 3rd	Burns Supper
January 9th & 23rd February 13th & 27th	Guild Meetings
January 31st February 28th	Midweek Reflection

CROSSWORD ANSWERS

ACROSS: 8. Bottomless pit. 9. Ice. 10. Decalogue. 11. Limbo. 13. Seconds. 16. Crimson. 19. Eager. 22. Abhorrent. 24. Lap. 25. Alpha and Omega.
DOWN: 1. Abdel. 2. Stream. 3. Wondrous. 4. Flocks. 5. USCL. 6. A pagan. 7. Athens. 12. OR. 14. Creation. 15. Dye. 16. Cravat. 17. In hope. 18. Need. no. 20. Galley. 21. Repeat. 23. Read.

..... and for your diary

March 13th, 27th	Guild Meetings
March 31st	Coffee Morning
March 29th	Messy Church

Who's Who in LPC

Minister	Rev Hilda C Smith	01546 602238
Session Clerk	Sandy Taylor	01546 606218
Interim Treasurer	Mary MacDonald	01546 602087
Gift Aid Convenor	Edna Armstrong	01546 602600
Roll Keeper	Frances Fleming	01546 602270
Fabric Convenor	Ian Davidson	01546 603784
Social Convenor	Margaret Davidson May Taylor Fiona Elder Roberta Bowen	01546 603784 01546 606218 01546 606151
Safeguarding Co-ordinator	Cathleen MacDonald	01546 603108
Worship Group	Margaret Jacobsen Rev. Hilda Smith Ian Davidson Kirsten Thompson	01546 606914 01546 602238 01546 603784
Finance Committee	Mary MacDonald Edna Armstrong Elma Munro	01546 602087 01546 602600 01546 602857
Guild Contacts	Anne Hunter Jessie Cranston May Taylor Chris Stevenson Nannie Ward Mary MacDonald	01546 603141 01546 602866 01546 606218 01546 600259 01546 602343 01546 602087

Editor: Roberta Bowen, Rouns End, Kilmory Road,
 Lochgilphead PA31 8SZ E-mail: drbowen@btinternet.com
 Tel: 01546 606151

